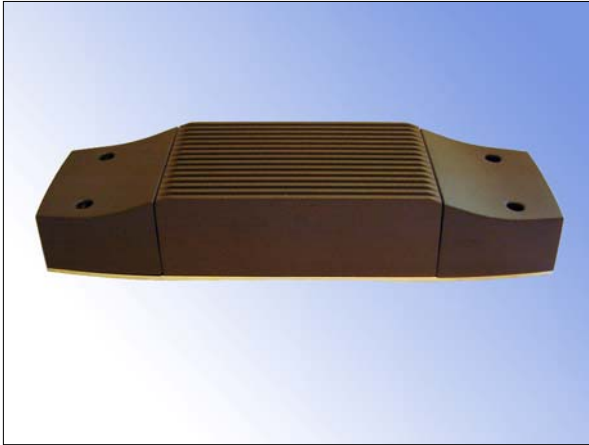




Powerpack PP35/70E



General information

Powerpack for 35W or 70W HID lamps type CDM, CMH or HCI.

Electronic gear for downlights.
Very low starting current allow significant saving in installations on site compared to other electronic gear on the market. See separate description comparing with similar powerpack.

Version in silvergrey = 35 W

Version in dark grey = 70 W

Weight excl powercable 0,6 kg

Powerpack primary side with inlet class I, 10 Amp or with strainreliefed cordset 3.5 m with plug for EU or UK fused specification upon request.

SR= L x W x H = 212 x 71 x 38 mm plus cable

QC= L x W x H = 212 x 71 x 38 mm plus cable

MP= L x W x H = 130 x 71 x 38 mm plus cable

MS= L x W x H = 110 x 71 x 38 mm plus cable

P023 – Powerpacks

moulded in versions

SR= Strain Relief

QC= Quick Connector

MP= Mounting Pads

MS= Mounting Studs

Europe

27012 PP35E 230V – SR

27013 PP35E 230V – QC

27014 PP35E 230V – MP

27015 PP35E 230V – MS

27016 PP70E 230V – SR

27017 PP70E 230V – QC

27018 PP70E 230V – MP

27019 PP70E 230V – MS



UK - Version



EU - Version



PP.....SR



Primary and secondary side with screw terminals

PP.....QC



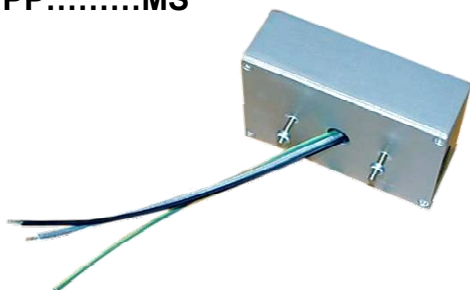
With quick connector (type ADELS) on secondary side and screw terminals on primary side.

PP.....MP



For built-in applications.
Connecting plate equipped with mounting pads (MP)

PP.....MS



For built-in applications.
Connecting plate with mounting studs (MS)



Technical data for installation

Complians

Radio disturbance	EN 55015	Safety	EN 60926: 1996/A1:1999
Immunity	EN 61547	Safety	EN 60928: 1995/A1:1999
Harmonics	EN 61000-3-2	Luminaries	EN 60598-1:2000
Safety	EN 60922:1997	Luminaries	EN 60598-2-2: 1996/A1:1997

Type	Input voltage	Input current (A)	Input power (W)	Frequency (Hz)	Power factor	Lamp power (W)	Ta (°C)	Approvals
PP-35E-230V	220 - 240	0.19	44	50/60	0.90	39	-20 ...45	CE, S
PP-70E-230V	220 - 240	0.35	80	50/60	0.95	73	-20 ...45	CE, S

Ignitor specification

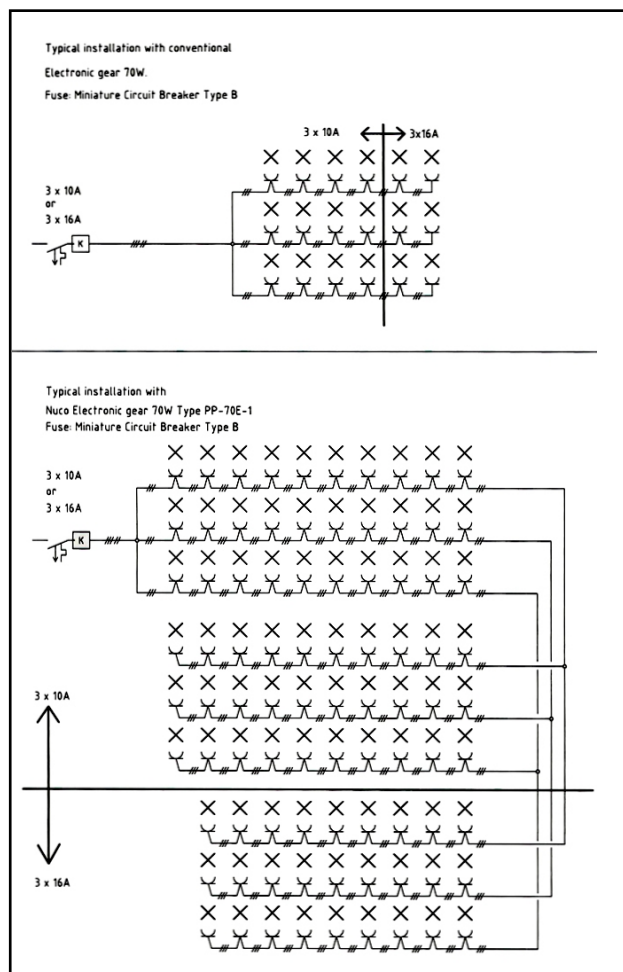
Ignitor voltage	3...5kV
Max capacitance load	120pF

The ignitor attempts stops after 17 minutes.
To reset ballast mains must be switched off and on.

Isolation resistance test

Apply 500 VDC between Line/Neutral and Earth.
After test ensure that Neutral is reconnected again before the installation is put into operation.

Earth leakage current < 0.5 mA per ballast



Note! Measurements will be verified in real installations, therefor data are subjected to change



Powerpack HID 20 W 230 V



General information

Powerpack HID 20W – 230V

This unit is intended to be used as a OEM ballast for low wattage Metal Halide lamps.

Specification

Type	HID 20W 230V
Mains voltage	220 – 240 VAC
Mains frequency	50 / 60Hz
Input current	0.1 A
Tc	+ 80°C
Ignition voltage	3 ...5 kV
U-out	380 V
Lamp	CMH-TC 20W (GE Lighting)

Mounting

The unit is intended to be used as a built-in electronic gear.

